

I. REVIEW/INTRO

A. Under the influence

- **What shapes one generation often gets passed to the next.**

Deuteronomy 6:6-9 (NKJV) “And these words which I command you today shall be in your heart. You shall teach them diligently to your children, and shall talk of them when you sit in your house, when you walk by the way, when you lie down, and when you rise up. You shall bind them as a sign on your hand, and they shall be as frontlets between your eyes. You shall write them on the doorposts of your house and on your gates.

- “Engraving” happens in the ordinary rhythms of life.

II. THE CHURCH ISN'T OPTIONAL, IT'S ESSENTIAL

A. Why is the church essential?

- We must be intentionally planted in the house of God, because if we are not, we will be unintentionally shaped by everything else.

B. The New Testament pictures the church as ...

- A family, a household, a people, a flock.

Ephesians 2:20-22 (NLT) Together, we are his house, built on the foundation of the apostles and the prophets. And the cornerstone is Christ Jesus himself. We are carefully joined together in him, becoming a holy temple for the Lord. Through him you Gentiles are also being made part of this dwelling where God lives by his Spirit.

- That means the church is not merely a place you attend, it is a people you are joined to.
- It's where truth is reinforced, gifts are developed, faith is strengthened, maturity is formed, and generations are shaped.

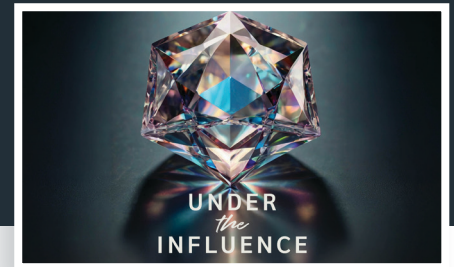
If we are not intentionally planted in the house of God, we will be unintentionally shaped by everything else.

C. Planted people flourish

Psalm 92:12-15 (NKJV) The righteous shall flourish like a palm tree, He shall grow like a cedar in Lebanon. Those who are planted in the house of the Lord shall flourish in the courts of our God. They shall still bear fruit in old age; they shall be fresh and flourishing,

- A plant removed from healthy soil does not become free, it becomes fragile.

III. PLANTING AND WATERING



A. God uses different people in the same process

1 Corinthians 3:5-9 (NLT) After all, who is Apollos? Who is Paul? We are only God's servants through whom you believed the Good News. Each of us did the work the Lord gave us. I planted the seed in your hearts, and Apollos watered it, but it was God who made it grow. It's not important who does the planting, or who does the watering. What's important is that God makes the seed grow. The one who plants and the one who waters work together with the same purpose. And both will be rewarded for their own hard work. For we are both God's workers. And you are God's field. You are God's building.

- **Parents: You have a role but you're not God**, you can't force spiritual growth or manufacture faith.

B. The home is the first place of influence, but not the only place

- The church creates environments where what is being engraved at home can be reinforced through leaders, teachers, pastors, small groups, worship, and serving.

C. This is why the church matters

IV. FROM ONE GENERATION TO THE NEXT

A. This is a church-wide mission

Psalm 145:4-5 (NKJV) One generation shall praise Your works to another, and shall declare Your mighty acts. I will meditate on the glorious splendor of Your majesty, and on Your wondrous works.

- Every generation carries responsibility for the next generation.
- You may not be raising children in your home, but you can still help raise a generation in the Kingdom.

B. Next Gen ministry at Joy

- We are raising a generation that knows God.
 - A generation that honors the Word of God.
 - A generation that recognizes the voice of God.
 - A generation that walks in the power of the Spirit of God.
 - A generation that serves with joy.
 - A generation that leads with courage.

C. The planted flourish

- People want the fruit of being planted without the commitment of being planted.

Psalm 92:12-15 (NKJV) The righteous shall flourish like a palm tree, He shall grow like a cedar in Lebanon. Those who are planted in the house of the Lord Shall flourish in the courts of our God. They shall still bear fruit in old age; They shall be fresh and flourishing,

If we do not lead the influence, we will follow it. But if we stay planted, God will bring the increase.